

# embroideryarts

a division of INTARSIA ARTS

**Program Title:** Bernina artista

**Version:** 3.1

## General Overview

This tutorial will focus on creating a monogram design using Monogram fonts that were not included with the installation of the *Bernina artista* software. You will be making a three-letter monogram using the Empire Monogram set. To create this monogram (ABC), the first name initial (A) goes on the left, the larger last name initial (B) goes in the center, and the middle name initial (C) goes on the right.

Embroideryarts filenames have a consistent naming structure. Each Monogram set style has a filename beginning with either A or AL, followed by a series of numbers, and ending in a letter of the alphabet. Many styles have two sizes for each letter, differentiated as 2A for the larger size letter A, and A for the smaller one. The same sequence is used for B, C, D, etc.

The Empire Monogram set, which is featured in this tutorial, has a separate file for the left, (AL1201LA), middle (AL1201MA), and right (AL1201RA) letter versions.

## Software Overview

The *artista Designer* software has a cataloging program called *Portfolio* which will allow cataloging and converting of designs. The *artista Designer* has three optional segments to choose from. *Picture View* allows graphic images to be inserted into the *artista* software. *Design View* allows designs to be edited or graphics to be digitized. *Artistic View* allows designs to be previewed on screen as sewn stitches.

In this tutorial, you will be working in the *Design View* area.

## Setting Up Measurements

### Metric vs. U.S.

In this segment, you will learn how to change the measurement setting in your computer from U.S. to Metric. It is easier to divide metric measurements in tenths when working with the grid in the software. Before opening the *artista* software, the computer setting in Microsoft Windows has to be set to Metric. The *artista* software always has to be closed when making these changes to the computer. The U.S. setting is used if the design is made

with inch measurements. For example, a customer may have requested a design to be digitized or customized to 2 inches in height and 3 inches in width.

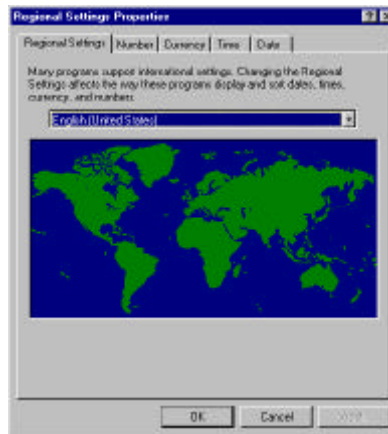
For this tutorial, use the metric measurement system. The following are the steps for changing the computer settings to Metric.

### Windows 95, 98 and ME

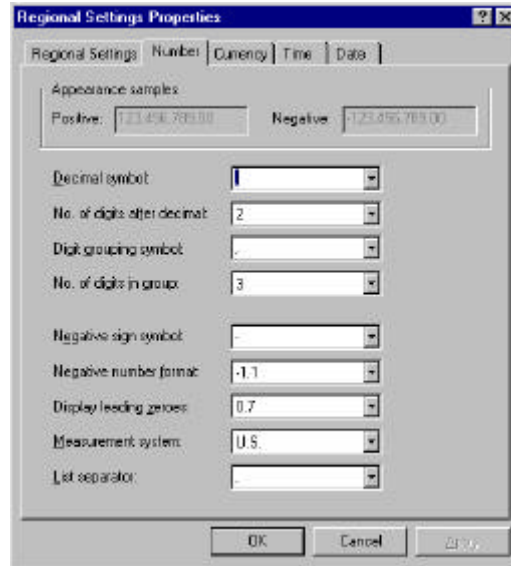
- If the *artista* software is open, close it.



- Double left mouse click on *My Computer*, which is located on the computer's desktop.
- Double left mouse click on *Control Panel* folder.
- Double left mouse click on *Regional Settings*.



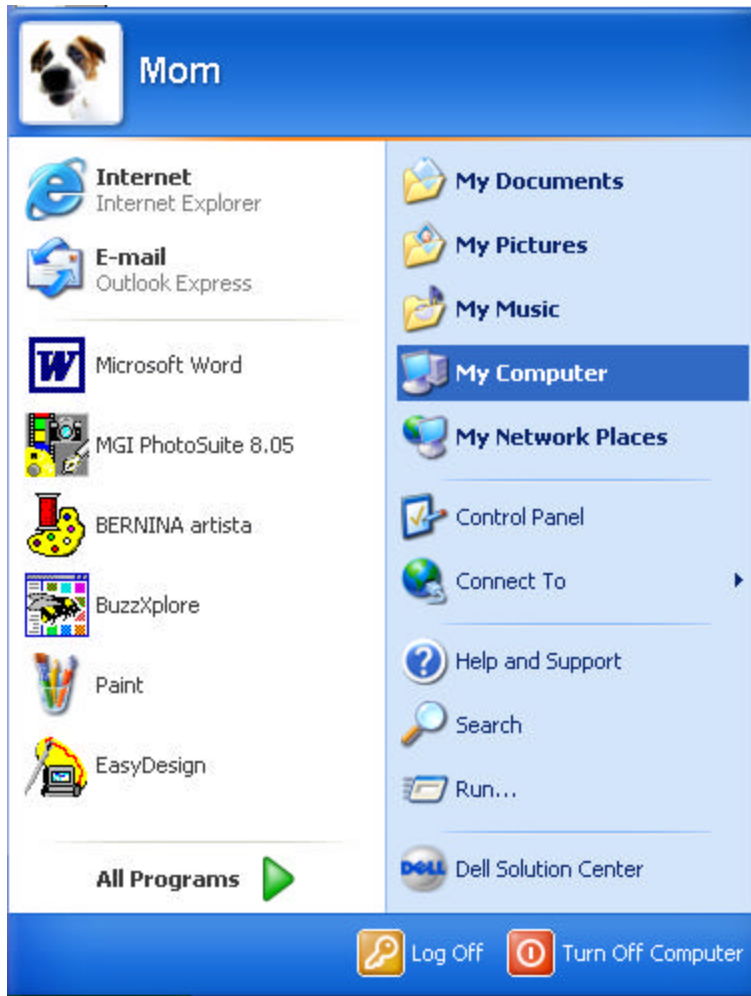
- Left mouse click on the *Number* tab.



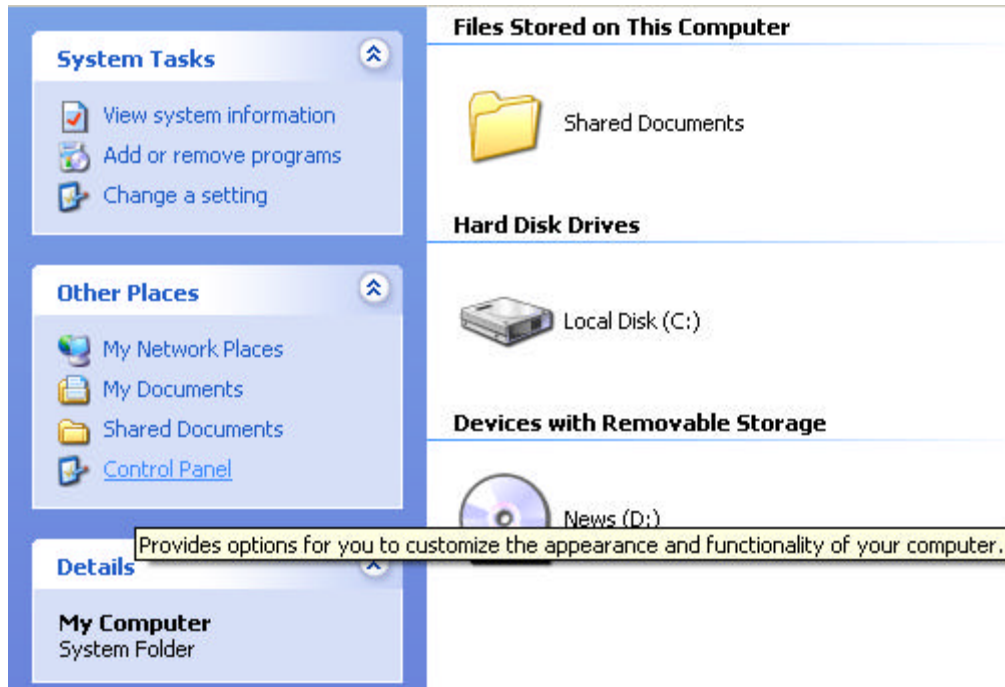
- Left mouse click on the drop down arrow next to measurement system and choose ***Metric***.
- Left mouse click on ***Apply***.
- Left mouse click ***OK*** and then open the ***artista*** software.

## **Windows XP**

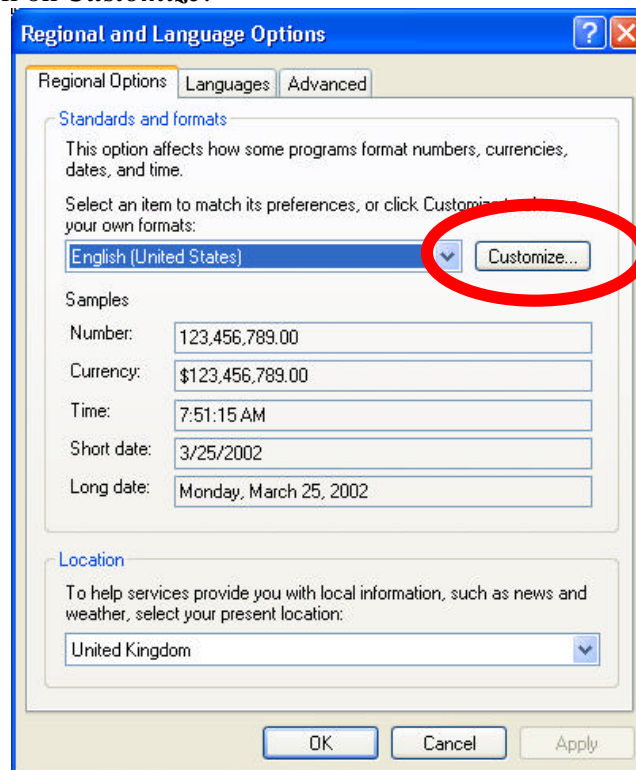
- If the ***artista*** software is open, close it.
- Left mouse click on ***Start***.
- Left mouse click on ***My Computer***.



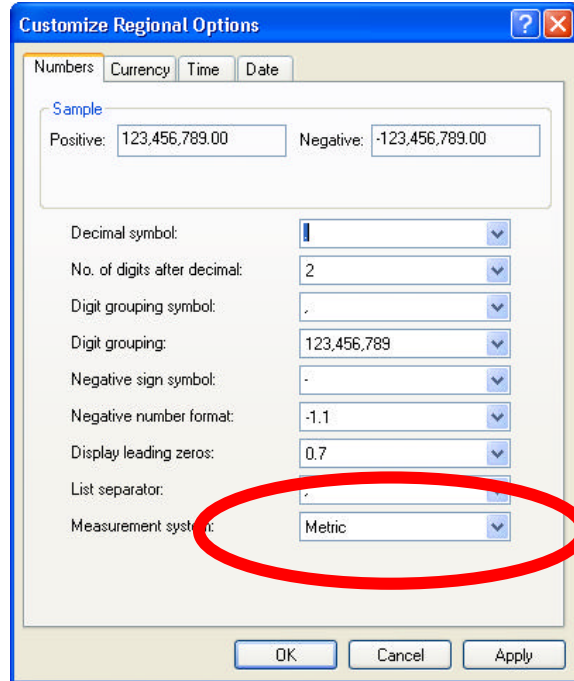
➤ Left mouse click on *Control Panel* on the right side.



- Left mouse click on **Regional Options**.
- Left mouse click on **Customize**.



- Choose **Metric** from the **Measurement system** drop down arrow.



- Left mouse click on **Apply**.
- Left mouse click on **OK**.

Now open the **artista** software and the measurements will be in the metric system.

### **Opening artista**

Fonts that had been created outside of what is installed by the **Bernina artista** software have to be handled as designs.

- Left mouse click on the **Start** icon in the lower left hand corner of **Windows**.
- Left mouse click on **Program**.
- Left mouse click on **Bernina artista**.

or



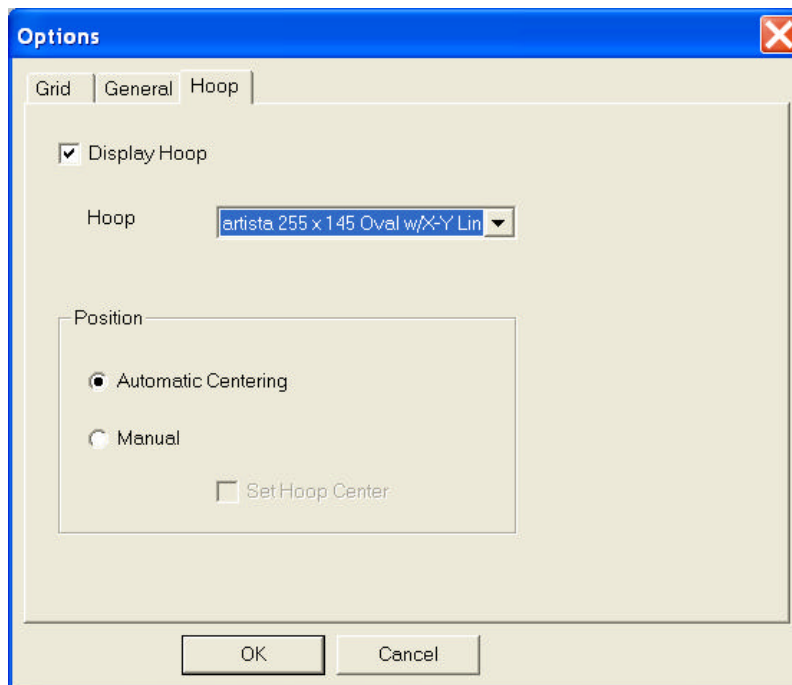
ARTISTA

- Double left mouse click on the *artista* icon on *Windows* desktop.

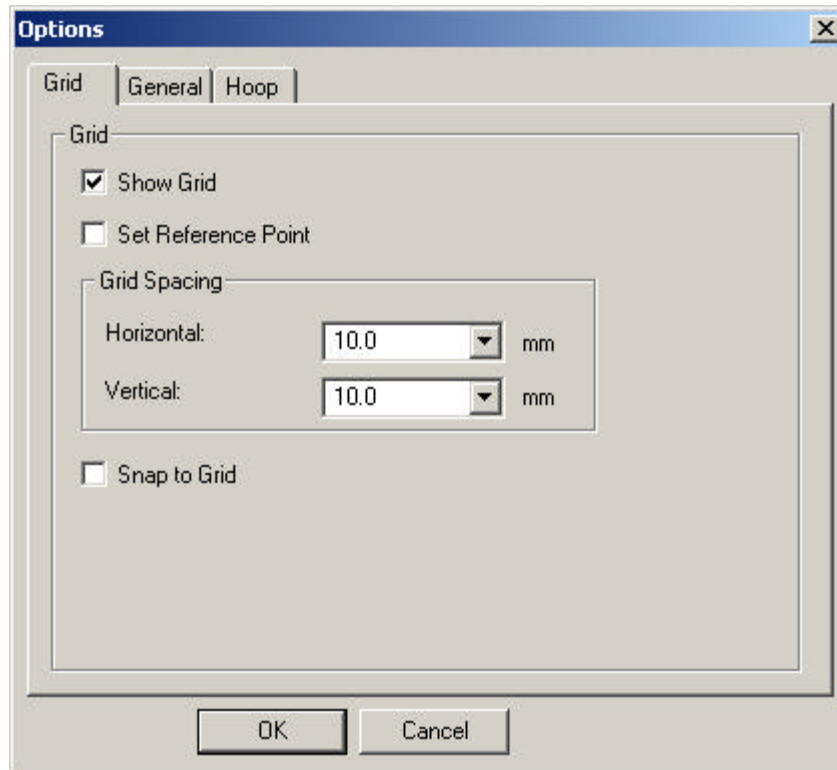
## Setting Up artista

The *Bernina artista* software can be set up to help with the positioning of the monogramming designs as follows:

- Right mouse click on the *Hoop* icon from the top menu bar.
- Select the 200 x 155mm hoop with X/Y lines.



- Left mouse click on the *Grid* tab.



- The **Show Grid** box should be checked and 10.0 mm should be in the **Horizontal** and **Vertical** boxes for grid spacing.
- Left mouse click on **OK**.

### **Open First Letter**

- At the top menu bar, left mouse click on **File**.
- Left mouse click on **Open**.
- Left mouse click on the **Files of type** drop down arrow and select the **.SEW** format.
- Locate the folder location for the monogram design on the computer.
- Single left mouse click on **A11201mb**.
- Left mouse click on **Options**.
- The pop-up screen shown below will appear.



Select *Leave Stitches As Individual Stitches* when you have a design with fancy fills that has not been digitized in the *artista* software. By doing this, stitches will not be grouped and converted into object shapes.

By selecting the *Leave Stitches As Individual Stitches* option, the stitch processor is turned off and no stitches are added or deleted when resizing occurs. With the *Convert Stitches into Object Shapes* option, the stitch processor is turned on and some of the fancy fills may not convert properly if the design was not digitized in the *artista* software.


- Left mouse click on *Convert Stitches into Object Shapes*.
- Left mouse click on *Open*.

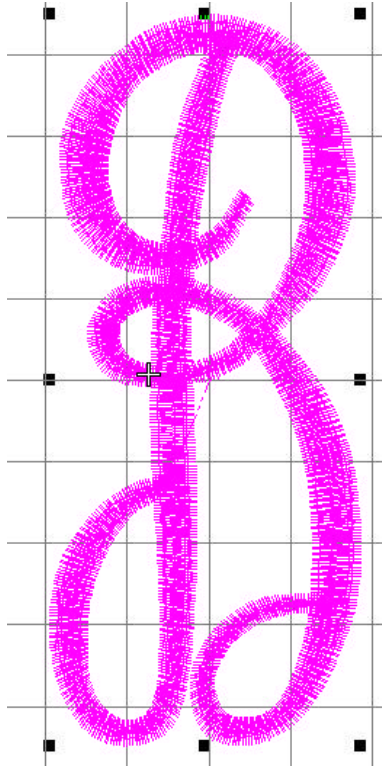
### **Grouping**

The letter “**B**” was created in small individual segments. The purpose of grouping is to take all object parts of a design and make them one. Once the design is grouped, it may be edited as one item without editing individual parts separately.

- Left mouse click on *Edit* from the top menu bar.
- Left mouse click on *Select All*.
- Left mouse click on *Arrange* from the top menu bar.
- Left mouse click on *Group*.



or

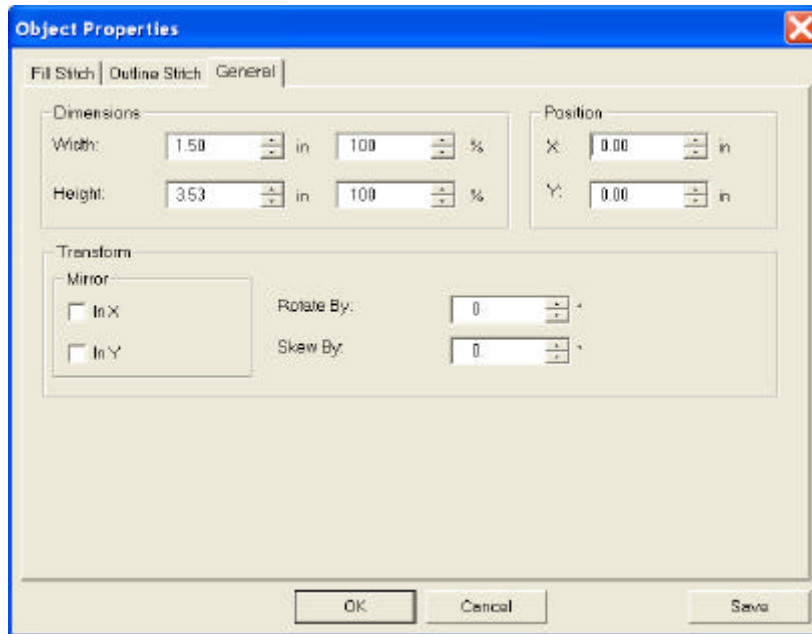
- With the letter “**B**” selected, left mouse click on the *Group* icon. 



### Centering a Design

The design opened into the *artista* software improperly centered. This can be easily corrected.

- The above graphic of the design shows it is magenta in color with black squares around it. This denotes that the design is selected. If the design is not selected, left mouse click on the *Select* icon . Place the cursor on the design and left mouse click on it.
- Left mouse click on the *Object Properties* icon. 
- Left mouse click on the *General* tab.



- In the **Position** boxes, input 0 for X and Y to position the design in the center of the hoop.
- Left mouse click on **OK**.

### Add the Second Letter

- Left mouse click on **File** at the top menu bar.
- Left mouse click on **Insert Design**.
- Left mouse click the drop down arrow and select **.SEW** for **Files of type**. Locate the computer folder which contains the designs.
- Left mouse click on **All2011a**.
- Left mouse click on **Open**.




### **Group**

The design has been inserted into the selected hoop area as shown in the above graphic. It will have to be grouped.

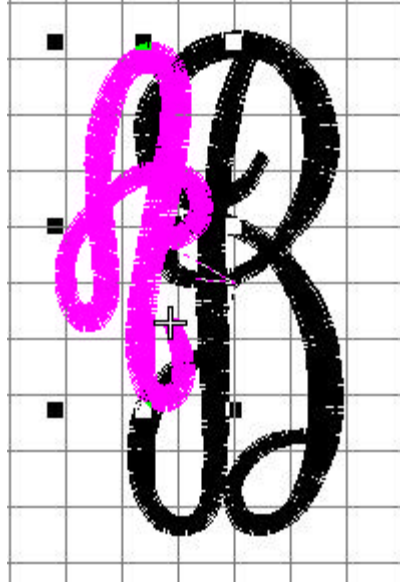
- Left mouse click on *Arrange* on the top menu bar.
- Left mouse click on *Group*.

or

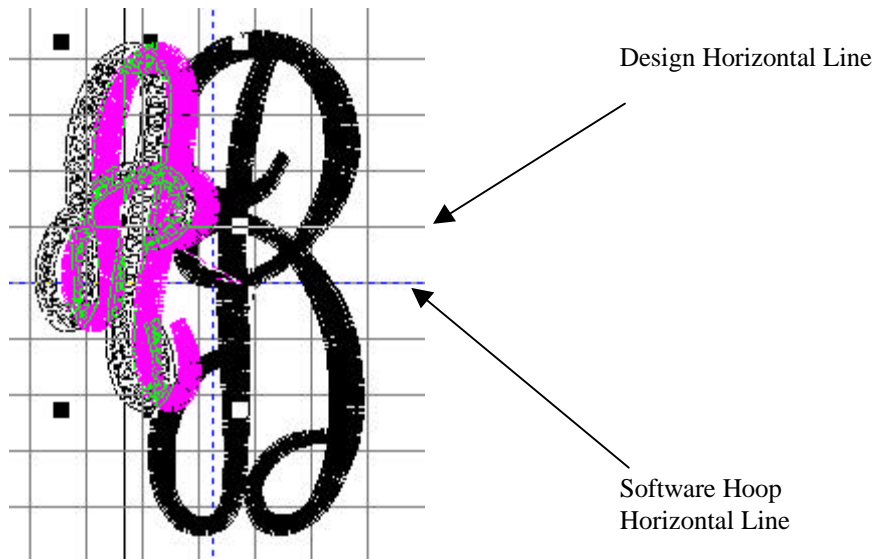
- With the letter “**B**” selected, left mouse click on the *Group* icon. 

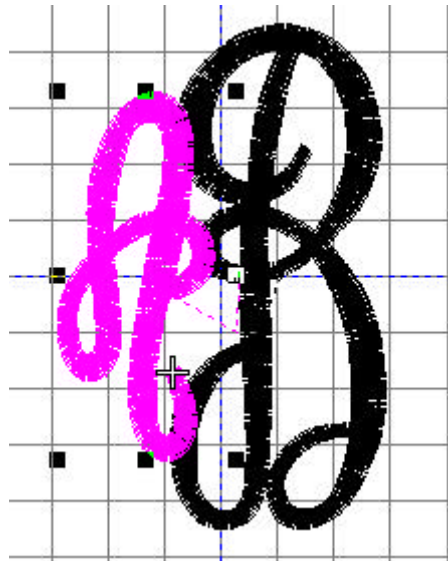
### **Repositioning**

The software has horizontal and vertical solid lines through the center of the hoop area to help with the positioning of designs in the hoop.



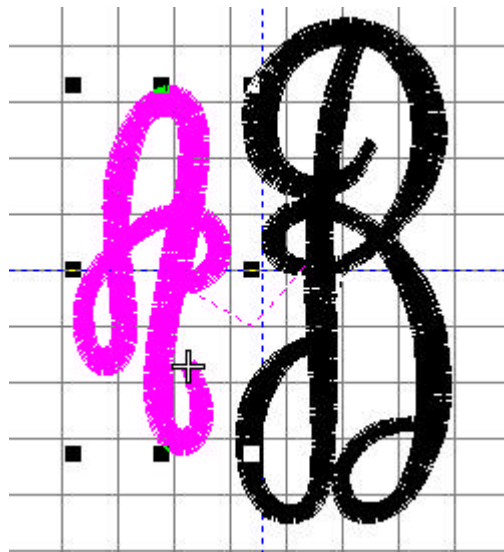
To reposition the letter “A”, press the **Down Arrow** key on the keyboard. Note that when pressing the arrow key, there is a shadow of the horizontal and vertical lines for the design. Continue to press the **Down Arrow** key until the letter’s horizontal line is directly on top of the hoop’s horizontal line.





Horizontal lines overlapped

Press the left arrow key on the keyboard to position the letter “A” at the desired distance from the letter “B”.





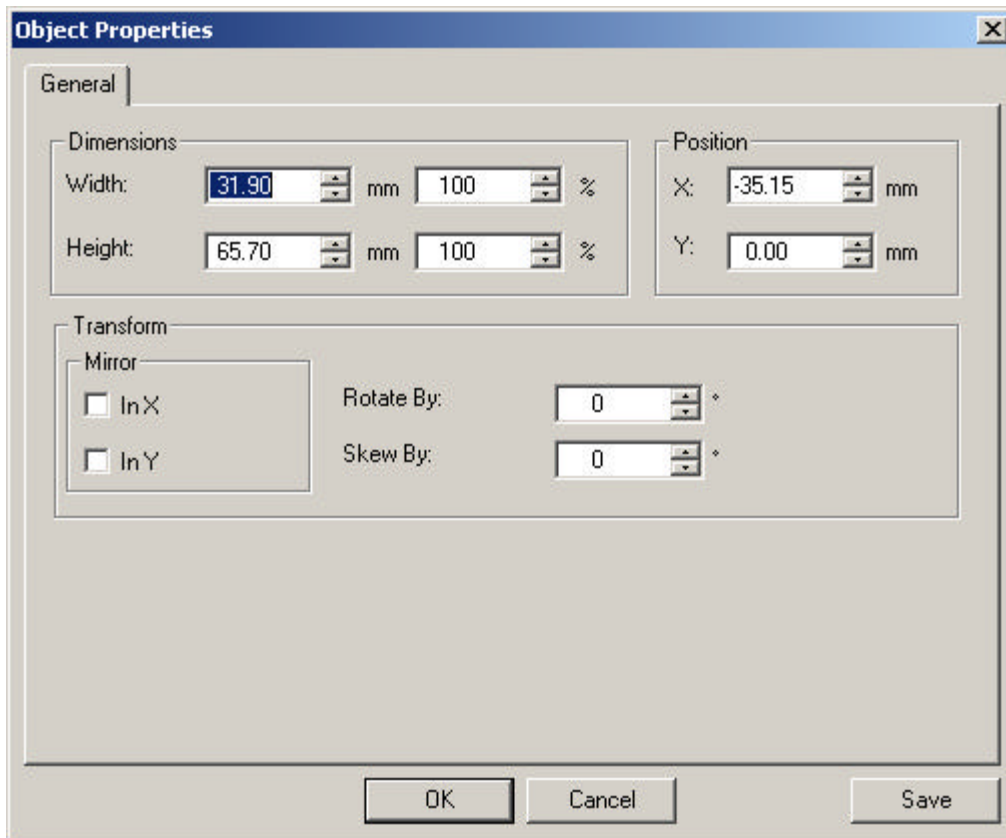
### Add the Third Letter

The steps for adding the third letter are the same as previously described for the second. Once the horizontal line for letter “C” is directly on top of the software hoop’s horizontal line, use the **Right Arrow** key on the keyboard to position it to the right of the letter “B”.

## Fine Tune Placements

Now that all letters have been placed in the hoop area, it is easy to fine tune the position of the letters “A” and “C” relative to letter “B”.

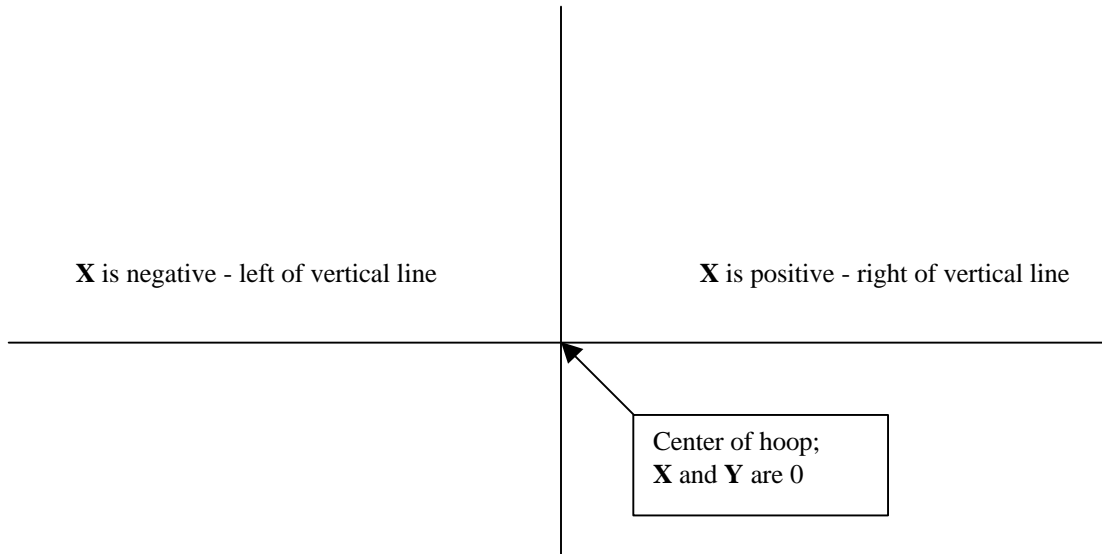
- Left mouse click on the *Select* icon . Place the cursor on the letter “A” and left mouse click on it.
- Left mouse click on the *Object Properties* icon. 





- **Y** represents the vertical placement of the design relative to the horizontal line. The design should be centered over the horizontal line therefore 0 will have to be entered in the box. **X** represents the horizontal distance of the design from the vertical line.

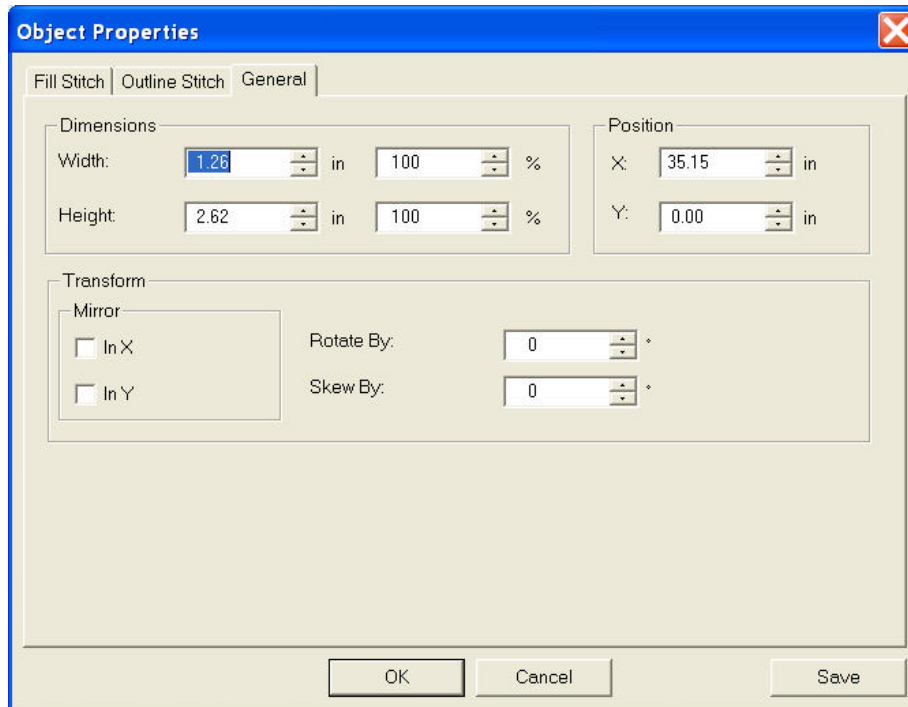
Here’s a little explanation that will help you understand why positive and negative numbers are used for the **X** and **Y** positions. When the design center line is to the left of the hoop vertical line, **X** is negative. When the design center line is to the right of the

vertical line, **X** is positive. **Y** is positive when the design center line is above the hoop horizontal line and negative when below it.



Make a note of the **X** position of letter “A” (-35.15) and left mouse click on **OK**.

- Left mouse click on the **Select** icon,  if it is not already activated.
- Place the cursor on the letter “C” and left mouse click to select it.
- Left mouse click on the **Object Properties** icon, .
- Because the letter “C” is to the right of the vertical line, **X** should be positive 35.15 and the letter should be centered relative to the horizontal line ( $Y = 0$ ).

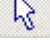



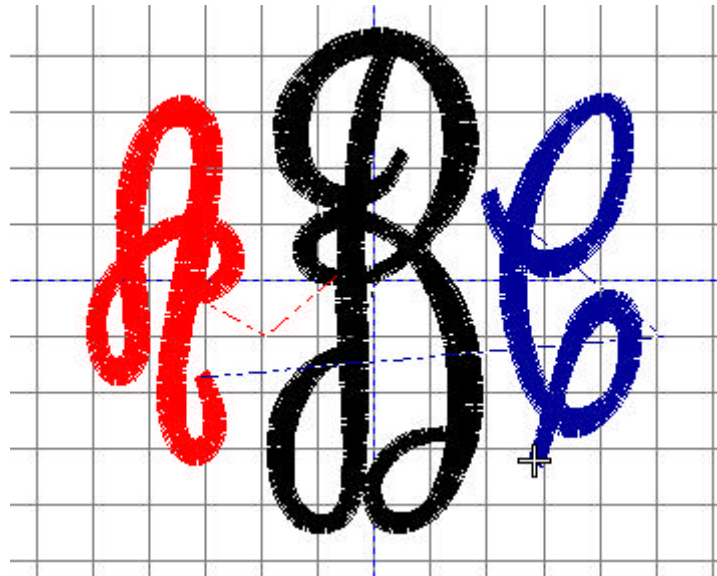
- Left mouse click on **OK**.

## Options

### Changing Colors

Each letter may have a distinct color for different monogram effects.

- Left mouse click on the **Select** icon,  if it is not already activated.
- Left mouse click on the letter “A”.
- Left mouse click on the **Color Menu** drop down arrow and select the color red. 
- Press the **Esc** key on the keyboard to deselect the letter “A”.




- You can repeat the above steps for changing the colors of letters “B” and “C”.

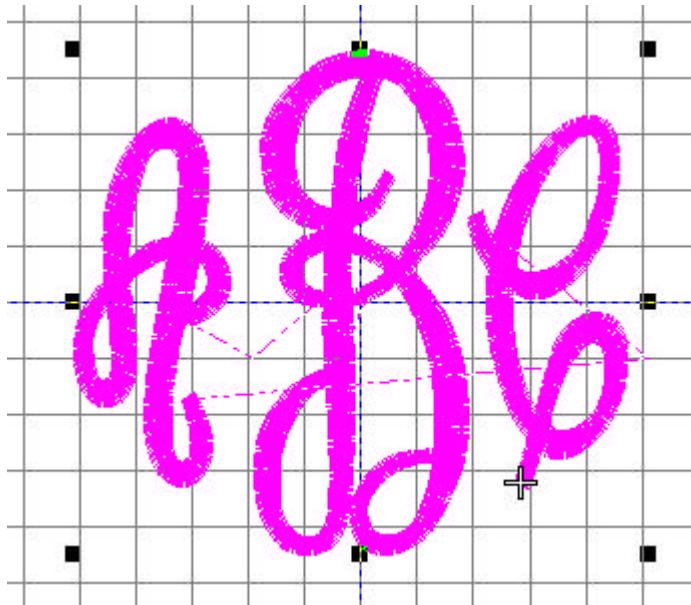
### **Resizing**

Resizing the monogram design can be done with the letters individually or it can be done as one complete unit which will result in a uniform resize.

- Left mouse click on *Edit*.
- Left mouse click on *Select All*.
- Left mouse click on *Arrange*.
- Left mouse click on *Group*.

or

- With all the letters selected, left mouse click on the *Group* icon. 




### **Resizing Handles**


Once the design has been grouped and still selected as shown in the above graphic, the letters can be resized using the black handles. When the design is resized, the stitch count is also increased or decreased to retain the original stitch density of the design.

- Left mouse click on any one of the corner handles. Keep the left mouse button pressed in and drag the handle in to reduce the size of the design or drag it out to increase the size of the design. Once the design is at the desired size, release the left mouse button. The design may now be resized proportionately in height and width.
- Left mouse click on the top or bottom middle handle. Keep the left mouse button pressed in and drag the handle in to reduce the height of the design or drag the handle out to increase the height of the design.
- Left mouse click on one of the side middle handles. Keep the left mouse button pressed in and drag the handle in to reduce the width of the design or drag the handle out to increase the width of the design.

### **Object Properties**

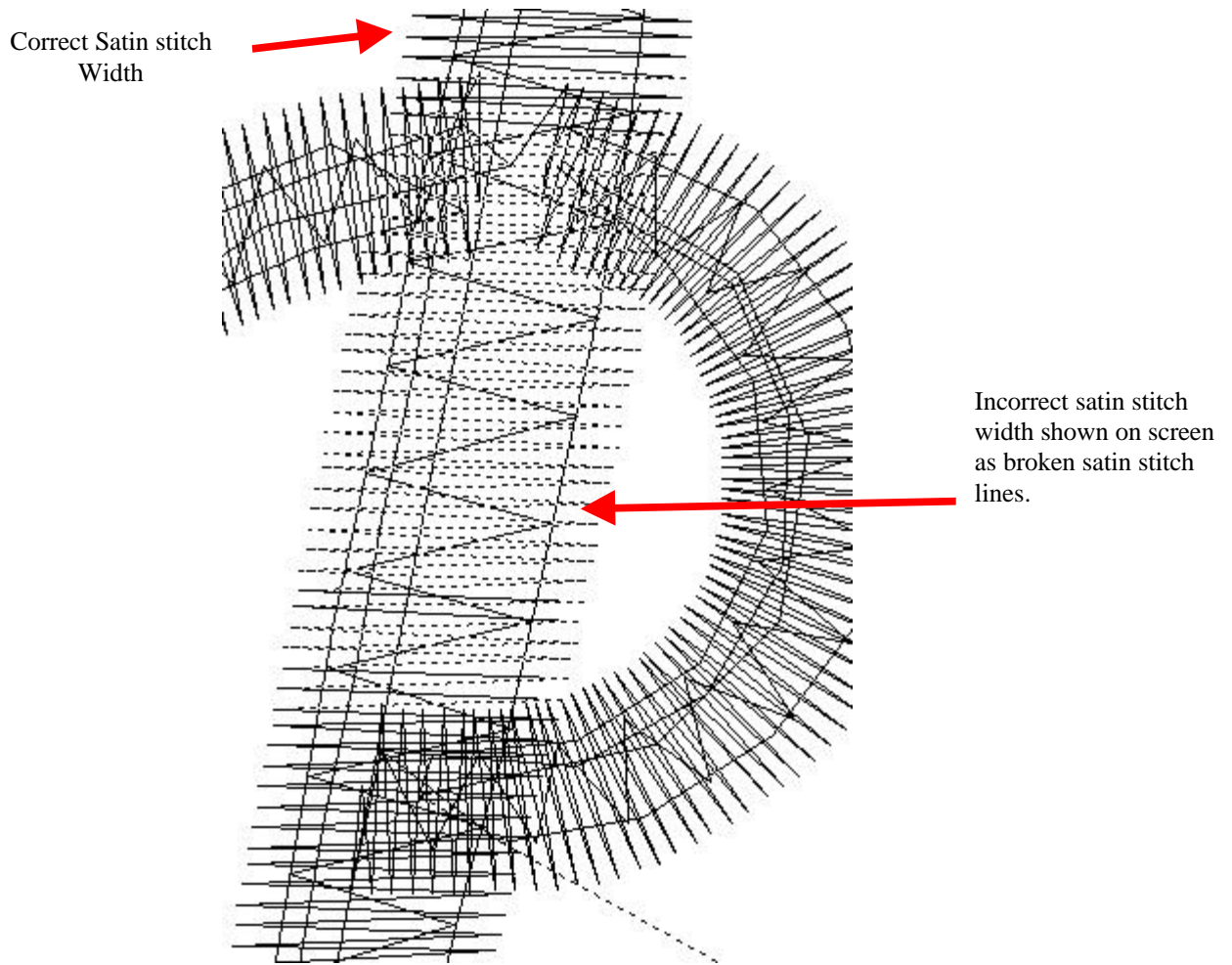
When an exact measurement is given for a monogram or design, resizing the design can be easily done using the following steps.

- The design should be selected. If the design is not selected, left mouse click on the **Select** icon . Place the cursor on the design and left mouse click on it.

- Left mouse click on the *Object Properties*. 
- Input the exact measurement in the **Height** and **Width** boxes. The design can also be resized by percentage. I have found great success in enlarging this design up to 175 percent or reducing it down to 50 percent, while still retaining the original stitch density.
- Left mouse click on *OK*.

In resizing designs using the *Object Properties* method, make sure that the width of the design's satin stitches is not greater than 12 mm (½ inch). Large satin stitch widths can snag or catch on objects and also do not fill in adequately in some areas. If the stitch width is greater than 12 mm (½ inch), the software may turn some areas of the design to step fill stitch type. The areas that are wider than 12 mm (½ inch) are shown on the screen by broken lines and will sew out as a step fill. Areas that are solid in color are of the correct satin stitch width.

To measure the width of a satin stitch on screen, press the “**M**” key on the keyboard. Place the cursor on the very edge of the stitches on the left hand side and left mouse click. A line is now connected to the cursor. Drag the cursor to the opposite side on the very edge of the stitches. The status line will show the width measurement of the stitches.



Since the design file that you are working in is not of the original **.ART** file type, changing the density or the fill is not guaranteed. Save the file in the appropriate format for your machine. It is best to test sew any design on similar scrap of fabric before actually sewing it on a garment or project.

Reneah Raffay is a freelance software instructor who has become sought-after at many conferences and retreats throughout the country. Reneah shares her digitizing knowledge while instructing the Bernina *artista* software and has developed her own style of teaching students to understand and use the software.

Additional *artista* tutorial products may be purchased at <http://www.goingsewing-artista.com/store.htm>

## ***embroideryarts***

a division of INTARSIA ARTS

17 Fourth Avenue Nyack, New York 10960  
888 238 1372 845 358 554 6 845 358 2696 FAX intararts@earthlink.net EMAIL